

**Climax Metal Products Company**

8141 Tyler Boulevard

Mentor, Ohio 44060

USA

Toll free: 800-542-6552

Phone: 440-585-0300

Fax: 800-860-5553

Email: [sales@climaxmetal.com](mailto:sales@climaxmetal.com)Website: [www.climaxmetal.com](http://www.climaxmetal.com)

## ITEM # CR-22, STANDARD TAPERED TYPE MANDRELS FOR CARTRIDGE ROLLS - TYPE2

Quick change mandrels for coated abrasive cartridge rolls. Feature sharp, coarse threads which hold cartridge rolls securely in place during operation. Rust proof finish.

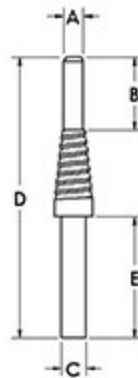
[View Catalog Page](#)



[Drawing](#) | [Dimensions](#) | [Specifications](#) |

### Drawing

### Dimensional Drawing



## Standard Tapered Type Mandrels for Cartridge Rolls

## Dimensions

<b>A-Pilot Dia.</b>	1/4 in
<b>B-Pilot Length</b>	1 1/2 in
<b>C-Shank Dia.</b>	1/4 in
<b>E-Shank Length</b>	1 1/4 in
<b>D-O.A.L.</b>	3 1/2 in

## Specifications

<b>UPC Code</b>	044861006382
<b>Downloads</b>	<a href="#">Catalog Page</a>

## Competitor Part Number

<b>Alternate Part Number</b>	101593651
------------------------------	-----------